

# Unpacking instructions for Qcells solar modules of the Q.TRON S-G3R Series



## Safety information for Qcells solar modules

### BEFORE UNPACKING

Before unpacking the solar modules, please read these instructions as well as the installation and operating instructions. Failure to do so may result in personal injury and material damage. To ensure safe unpacking, the following measures and guidelines must be observed. The modules may only be unpacked, installed and commissioned by qualified and authorised specialists. Qcells accepts no liability whatsoever for damage caused by disregarding these and other instructions. The complete installation instructions can be found in the download area of the Qcells website at [www.qcells.com](http://www.qcells.com).

### SAFETY INFORMATION



#### **WARNING!**

**Risk of injury and crushing due to modules falling over!**

**Damage to the modules!**

The solar modules are very stable when strapped together. However, it is possible that, if they are improperly unpacked and the following measures are disregarded, the modules could tip over.

Therefore, please observe the following principles:

- Store the module pallet in a dry, well-ventilated and secure place. The original packaging is not weather-resistant.
- The module is a glass product. Take great care when unpacking, storing and transporting it.
- Avoid mechanical stress on the modules during storage and transport (e.g. due to torsion or deflection). Never step on the modules. Do not place any objects on the modules.
- Protect the modules from scratches and other damage.
- If possible, carry the module with both hands by the edges or use a glass suction lifter. Immediately remove any marks left by the glass suction lifter.
- Wear protective gloves to avoid cuts to your hands.
- Never lift or carry solar modules by the junction boxes or cables. Avoid pulling on the cables.
- Do not stand the module unprotected on its edges. Always protect the corners. Avoid damaging the frame.
- Unpack the module pallet in well-ventilated areas.

## Applicable packaging symbols

Comply with all pallet handling requirements listed below.



DO NOT STACK  
MORE THAN 2  
IN WAREHOUSE



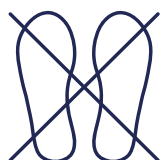
DO NOT STACK  
MORE THAN 2  
FOR TRANSPORT



THIS SIDE UP



FRAGILE



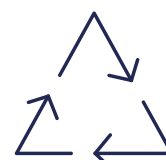
DO NOT  
STEP ON



KEEP DRY



DO NOT PULL  
THE CABLE



RECYCLE

# Unpacking the module pallet

## PROTECTIVE EQUIPMENT

- Always wear protective gloves!

## REQUIRED TOOLS

- Carpet knife
- Side cutters / strong scissors

## NUMBER OF PERSONS

- At least 3 people are required. Never work alone!



### WARNING!

**Risk of injury from falling modules!**  
**Damage to the modules!**

The solar modules are very stable when strapped together. However, it is possible that, if they are improperly unpacked and the following measures are disregarded, the modules could tip over.

## 1. PLACE MODULE PALLET



- Place the module pallet in front of a stationary object. This object should be able to withstand the module's weight and have a robust surface (e.g. another module pallet).
- This prevents the solar modules from tipping in the opposite direction during unpacking.

## 2. REMOVE PROTECTIVE FILM



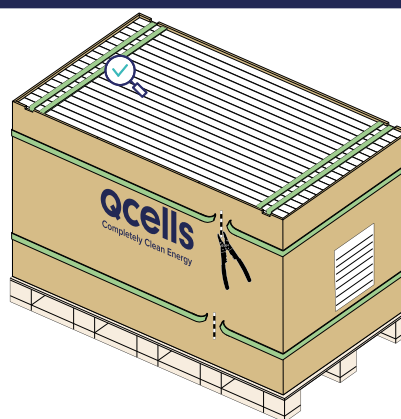
- Carefully cut the protective film with a carpet knife.
- Take care not to damage the cardboard underneath.
- Peel off the film upwards.

## 3. REMOVE VERTICAL STRAPS



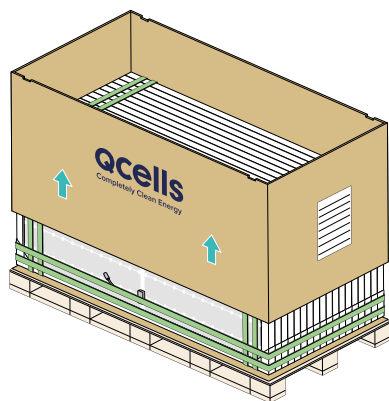
- Cut through and remove all vertical straps using side cutters. (horizontal straps remain in place until the next step)
- Remove the lid or cardboard cover.

## 4. REMOVE HORIZONTAL STRAPS



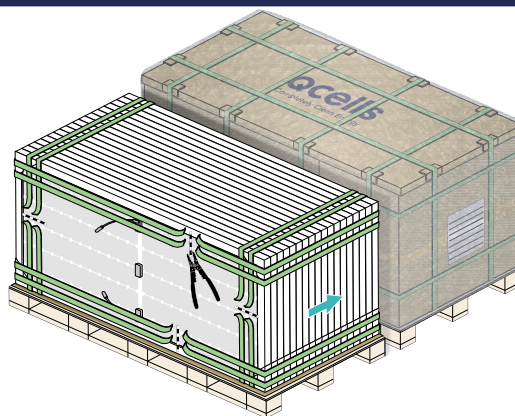
- Check that the modules are securely fastened inside the box.
- Now cut through and remove the horizontal straps using side cutters.

## 5. REMOVE CARDBOARD RING



- ➔ Lift the outer cardboard ring up over the modules or carefully tear it open.
  - Preferably, work in pairs.

## 6. REMOVE MODULE STRAPS



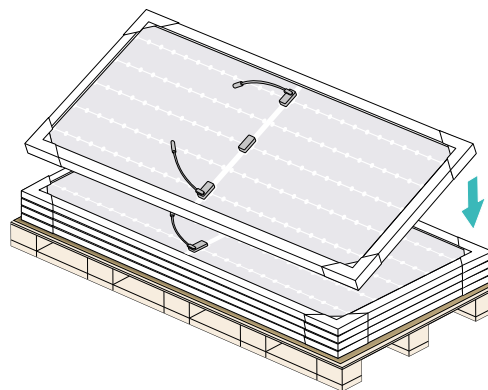
- ➔ Preferably, work in threes.
- ➔ Carefully loosen the vertical and horizontal straps with side cutters.
- ➔ Two people should secure the modules to prevent tipping while the third person removes the straps.

## 7. UNLOAD PALLET



- ➔ Lean the solar modules slightly towards the second pallet to prevent them from tipping backward.
- ➔ Two people should lift each module off the pallet one at a time.

## 8. RELOCATE THE SOLAR MODULES



- If the modules are not installed immediately, they must be repositioned from a vertical to a horizontal position.
- ➔ Place a piece of cardboard on the pallet and lay the first module down with the glass surface facing upwards.
  - ➔ Stack all other modules with the glass facing downwards.